

LOT 2  
33.75 AC

PT Atlas Waterfront 1st Add  
(C-L519)

PT GOVT  
LOT 5  
25.34 AC

GOVT  
LOT 6  
29.57 AC

SPOKANE RIVER

Note:  
Existing depiction for floating  
purposes only, property lines assumed  
to extend to ordinary mean high water  
mark for assessment purposes unless  
otherwise noted.

#22443  
7980  
0.7846 AC

NW Sec. 10 Twp 50 N. R. 4 W. B.



304  
825  
34 AC

#22443 #22  
7980  
0.7845 Ac  
797  
0.8226  
10078

#16494

pt 5000

pt 4000

pt 6100  
27.823 Ac

6800  
49.888 Ac

#22443  
7980  
0.7645 Ac  
#22  
797  
0.6286

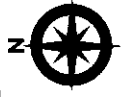
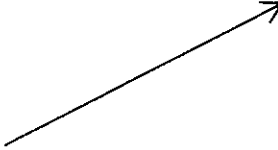
#16494

pt 5000

pt 4000

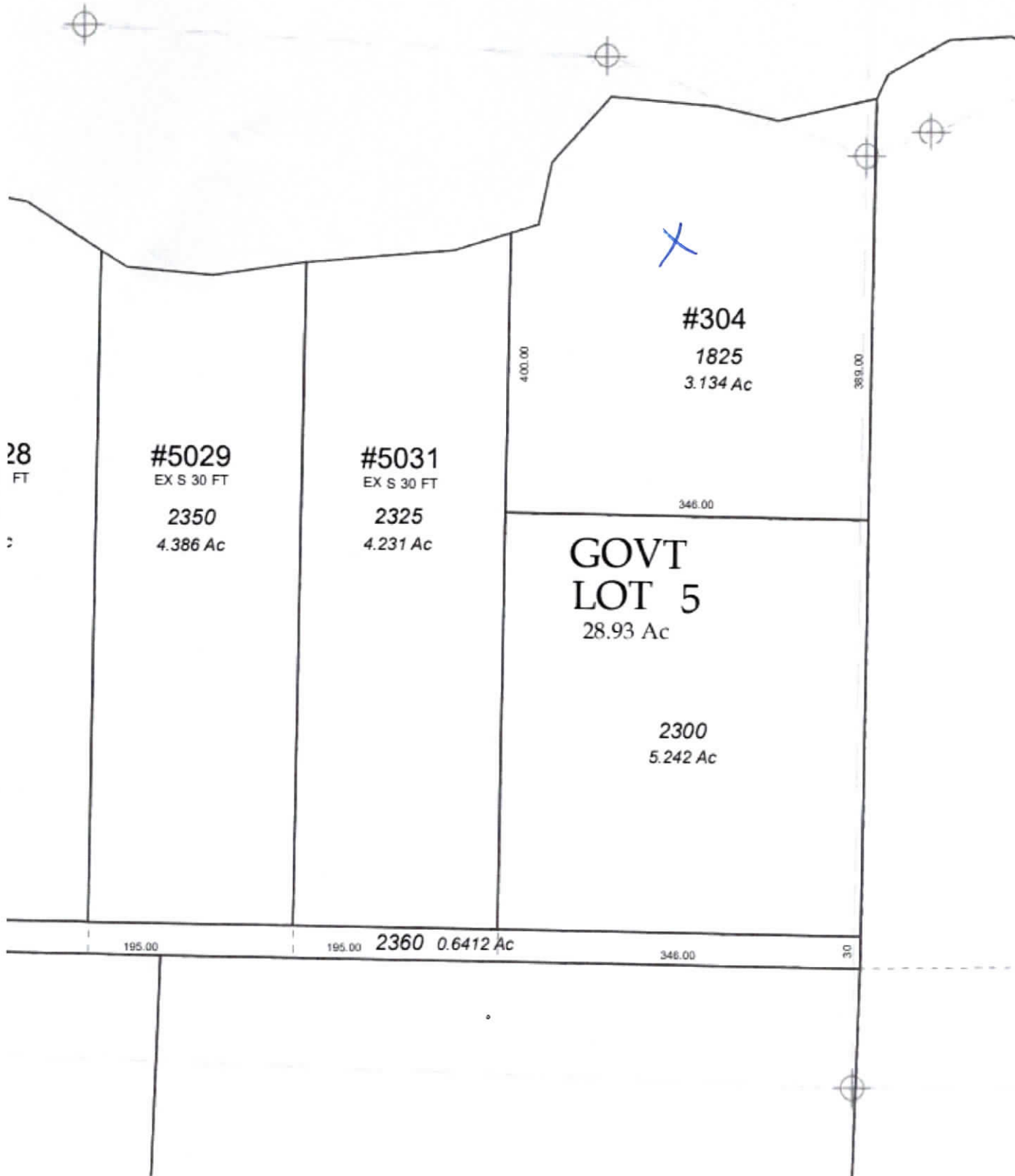
pt 6150  
27.623 Ac

6800  
48.886 Ac



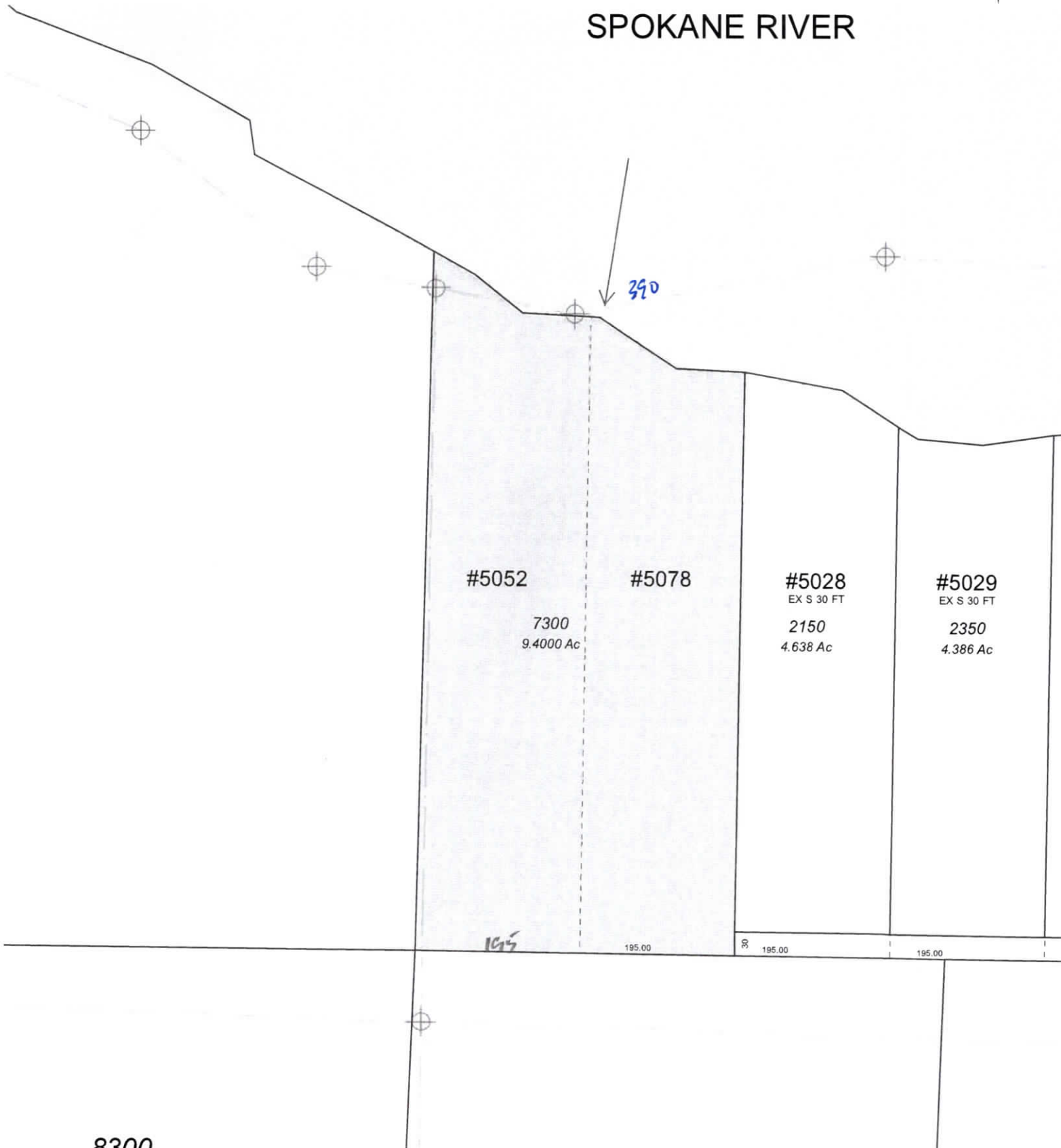


purposes only, property lines assumed to extend to ordinary mean high water mark for assessment purposes unless otherwise noted.





# SPOKANE RIVER





SPOK

GOVT  
LOT 6  
35.95 Ac

1400  
35.9500 Ac

#5052

#507

7300  
9.4000 Ac

1391.23

1

IC.

ers

8100  
20.0000 Ac

8300  
20.0000 Ac

750  
20.0000 Ac



NE



SPOKANE RIVER

SEE 1/4 SECTION 1

GOVT LOT 6  
35.95 Ac

1400  
35.9500 Ac

#5052

7300  
9.4000 Ac

#5078

#5028  
EX 8.30 FT

2150  
4.038 Ac

#5029  
EX 8.30 FT

2350  
4.385 Ac

#5031  
EX 8.30 FT

2325  
4.231 Ac

#304

1825  
3.124 Ac

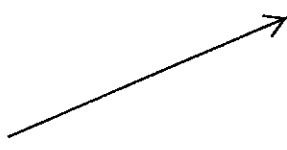
GOVT LOT 5  
28.93 Ac

2300  
5.242 Ac

8300  
20.0000 Ac

7500  
20.0000 Ac

7700  
20.0000 Ac



1320.00



GOVT  
LOT 6  
35.95 Ac

1400  
35.9500 Ac



#304  
1825  
3.134 Ac

#5052

7300  
9.4000 Ac

#5078

#5028  
EX 8.30 FT  
2150  
4.638 Ac

#5029  
EX 8.30 FT  
2350  
4.386 Ac

#5031  
EX 8.30 FT  
2325  
4.231 Ac

GOVT  
LOT 5  
28.93 Ac

2300  
5.242 Ac

8300  
20.0000 Ac

7500  
20.0000 Ac

7700  
20.0000 Ac



1320.00

PT #22609

pt 4420

pt 4450

Island B

#22609  
Island A

pt 4450  
Island C

pt 4450 pt 4650

Note:  
Shoreline depiction for illustrative  
purposes only; property lines assumed  
to extend to ordinary mean high water  
mark for assessment purposes unless  
otherwise noted.



SEE 1/4 SECTION

SPC

GOVT  
LOT 7  
47.97 Ac

54 EX TAX#  
4400  
749 Ac

#15837  
pt 4450  
6.268 Ac

#15971  
pt 4650  
13.118 Ac

GOVT  
LOT 6  
35.95 Ac

1400  
35.9500 Ac

#5052

7300  
2.4000 Ac

3.00  
405.00  
#15888  
EX R/W  
4440  
7.506 Ac

(900.00)

687.27

360.00

829.73

1313.73

1391.23

8100  
20.0000 Ac

8300  
20.0000 Ac

5300  
34.0000 Ac



1320.00

PT #22609

pt 4420

pt 4450

Island B

#22609

Island A

PT #22609  
pt 4420

pt 4450  
Island C

pt 4450

pt 4650

GOVT  
LOT 7  
47.97 Ac

#54 EX TAX#  
4400  
749 Ac

#15837  
pt 4450  
6.268 Ac

#15971  
pt 4650  
13.118 Ac

GOVT  
LOT 6  
35.95 Ac

1400  
35.9500 Ac

#15888  
EX R/W

4440  
7.506 Ac

#5052

7300  
8.4000 Ac

8100  
20.0000 Ac

8300  
20.0000 Ac

5300  
34.0000 Ac

Note:  
Shoreline depiction for illustrative  
purposes only; property lines assumed  
to extend to ordinary mean high water  
mark for assessment purposes unless  
otherwise noted.



SEE 1/4 SECTION

SPC

7  
20.0

1320.00

